

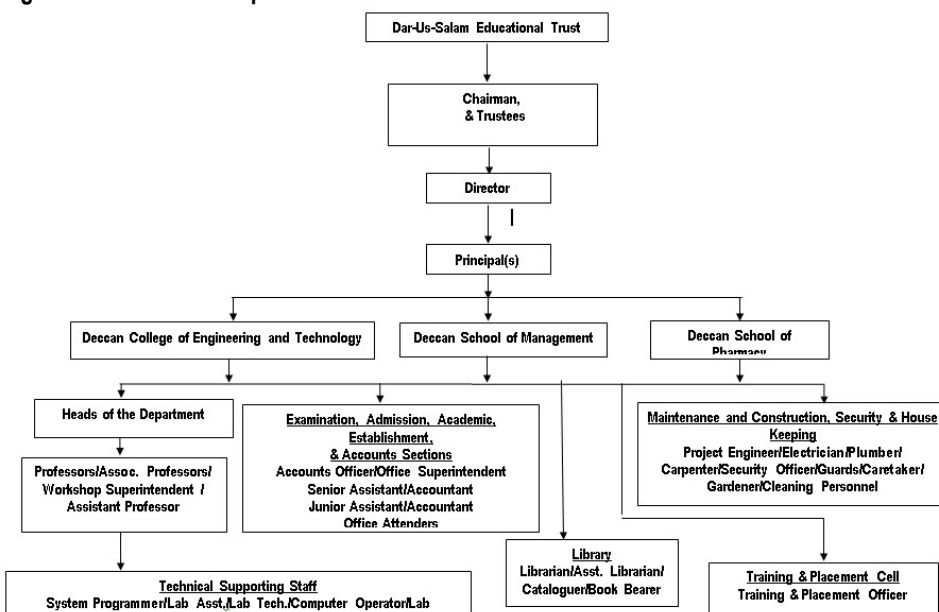
**MANDATORY DISCLOSURE**

Updated on: Jun3<sup>rd</sup>, 2022

<b>AICTE File No</b>	F.No. South-Central/1-10970542326/2022/EOA, Date: 03-Jun-2022																					
<b>Date/Period of last approval</b>	Date: 03-Jun-2022 / 01 Year (2022-2023)																					
<b>1</b>	<b>Name of the institution</b>	<b>DECCAN GROUP OF INSTITUTIONS</b> (A Self Financed Muslim Minority Technical Campus, Estd. by Dar-us-Salam Educational Trust) (Affiliated to Osmania University, Hyderabad & Approved by AICTE, New Delhi) Darussalam, Aghapura, Hyderabad – 500 001 Telangana, India Mobile: 9704731117 Email: <a href="mailto:dcet@deccancollege.ac.in">dcet@deccancollege.ac.in</a> URL: <a href="http://dgi.org.in/">http://dgi.org.in/</a>																				
<b>2</b>	<b>Name and address of the Trust</b>	<b>The Dar-Us-Salam Educational Trust</b> Darussalam, Aghapura, Hyderabad – 500 001 Telangana, India Mobile: 9704731117 Email: <a href="mailto:dcet@deccancollege.ac.in">dcet@deccancollege.ac.in</a> URL: <a href="http://dgi.org.in/">http://dgi.org.in/</a>																				
<b>3</b>	<b>Name and Address of the Principal/ Director</b>	<b>Prof. MIR IQBAL FAHEEM, Ph.D</b> Director DECCAN GROUP OF INSTITUTIONS (A Self Financed Muslim Minority Technical Campus, Estd. by Dar-us-Salam Educational Trust) (Affiliated to Osmania University, Hyderabad & Approved by AICTE, New Delhi) Darussalam, Aghapura, Hyderabad – 500 001 Telangana, India Mobile: 9704731117 Email: <a href="mailto:dcet@deccancollege.ac.in">dcet@deccancollege.ac.in</a> URL: <a href="http://dgi.org.in/">http://dgi.org.in/</a>																				
<b>4</b>	<b>Name of the affiliating University</b>	<b>OSMANIA UNIVERSITY</b> , Hyderabad - 500007, Telangana																				
<b>5</b>	<b>Governance</b>	<b>Members of the Board and their brief background</b>																				
		<table border="1"> <thead> <tr> <th>Name</th> <th>Designation</th> <th>Background</th> </tr> </thead> <tbody> <tr> <td>Barrister Asaduddin Owaisi</td> <td>Chairman</td> <td>Member of Parliament Hyderabad Lok Sabha</td> </tr> <tr> <td>Mr. Syed Ahmed Pasha Quadri</td> <td>Secretary</td> <td>Member of Legislative Assembly, Telangana</td> </tr> <tr> <td>Mr. Mohd. Abdul Muneem</td> <td>Trustee</td> <td>Prominent Industrialist</td> </tr> <tr> <td>Mr. Syed Akber Nizamuddin Hussaini</td> <td>Trustee</td> <td>Chancellor, Jamia Nizamia Islamic University, Hyderabad</td> </tr> <tr> <td>Mr. Akbaruddin Owaisi</td> <td>Trustee</td> <td>Member of Legislative Assembly, Telangana</td> </tr> </tbody> </table>	Name	Designation	Background	Barrister Asaduddin Owaisi	Chairman	Member of Parliament Hyderabad Lok Sabha	Mr. Syed Ahmed Pasha Quadri	Secretary	Member of Legislative Assembly, Telangana	Mr. Mohd. Abdul Muneem	Trustee	Prominent Industrialist	Mr. Syed Akber Nizamuddin Hussaini	Trustee	Chancellor, Jamia Nizamia Islamic University, Hyderabad	Mr. Akbaruddin Owaisi	Trustee	Member of Legislative Assembly, Telangana		
		Name	Designation	Background																		
		Barrister Asaduddin Owaisi	Chairman	Member of Parliament Hyderabad Lok Sabha																		
		Mr. Syed Ahmed Pasha Quadri	Secretary	Member of Legislative Assembly, Telangana																		
		Mr. Mohd. Abdul Muneem	Trustee	Prominent Industrialist																		
		Mr. Syed Akber Nizamuddin Hussaini	Trustee	Chancellor, Jamia Nizamia Islamic University, Hyderabad																		
		Mr. Akbaruddin Owaisi	Trustee	Member of Legislative Assembly, Telangana																		
		<b>Members of Academic Advisory Body</b>																				
		<table border="1"> <thead> <tr> <th>Name</th> <th>Designation</th> </tr> </thead> <tbody> <tr> <td>Barrister Asaduddin Owaisi</td> <td>Chairman, Darussalam Educational Trust, Hyderabad</td> </tr> <tr> <td>Mr. Syed Ahmed Pasha Quadri</td> <td>Secretary, Darussalam Educational Trust, Hyderabad</td> </tr> <tr> <td>Mr. Mohd. Abdul Muneem</td> <td>Trustee, Darussalam Educational Trust, Hyderabad</td> </tr> <tr> <td>Mr. Syed Akber Nizamuddin Hussaini</td> <td>Trustee, Darussalam Educational Trust, Hyderabad</td> </tr> <tr> <td>Mr. Akbaruddin Owaisi</td> <td>Trustee, Darussalam Educational Trust, Hyderabad</td> </tr> <tr> <td>Prof.Mir Iqbal Faheem</td> <td>Member Director, Deccan Group of Institutions, Hyderabad</td> </tr> <tr> <td>Prof. S.A. Azeez Basha</td> <td>Member Principal, Deccan School of Pharmacy, Hyderabad</td> </tr> <tr> <td>Prof. Raza Shah</td> <td>Member Principal, Deccan School of Management, Hyderabad</td> </tr> <tr> <td>Prof. Manisha Saxena</td> <td>Member Principal, Deccan School of Management, Hyderabad</td> </tr> </tbody> </table>	Name	Designation	Barrister Asaduddin Owaisi	Chairman, Darussalam Educational Trust, Hyderabad	Mr. Syed Ahmed Pasha Quadri	Secretary, Darussalam Educational Trust, Hyderabad	Mr. Mohd. Abdul Muneem	Trustee, Darussalam Educational Trust, Hyderabad	Mr. Syed Akber Nizamuddin Hussaini	Trustee, Darussalam Educational Trust, Hyderabad	Mr. Akbaruddin Owaisi	Trustee, Darussalam Educational Trust, Hyderabad	Prof.Mir Iqbal Faheem	Member Director, Deccan Group of Institutions, Hyderabad	Prof. S.A. Azeez Basha	Member Principal, Deccan School of Pharmacy, Hyderabad	Prof. Raza Shah	Member Principal, Deccan School of Management, Hyderabad	Prof. Manisha Saxena	Member Principal, Deccan School of Management, Hyderabad
		Name	Designation																			
		Barrister Asaduddin Owaisi	Chairman, Darussalam Educational Trust, Hyderabad																			
		Mr. Syed Ahmed Pasha Quadri	Secretary, Darussalam Educational Trust, Hyderabad																			
		Mr. Mohd. Abdul Muneem	Trustee, Darussalam Educational Trust, Hyderabad																			
Mr. Syed Akber Nizamuddin Hussaini	Trustee, Darussalam Educational Trust, Hyderabad																					
Mr. Akbaruddin Owaisi	Trustee, Darussalam Educational Trust, Hyderabad																					
Prof.Mir Iqbal Faheem	Member Director, Deccan Group of Institutions, Hyderabad																					
Prof. S.A. Azeez Basha	Member Principal, Deccan School of Pharmacy, Hyderabad																					
Prof. Raza Shah	Member Principal, Deccan School of Management, Hyderabad																					
Prof. Manisha Saxena	Member Principal, Deccan School of Management, Hyderabad																					

**Frequency of the Board Meeting and Academic Advisory Body:** Twice in a year

**Organizational chart and processes**



**Nature and Extent of involvement of Faculty and students in academic affairs/ improvements**

Available in the respective Departments/Programmes on the following websites

URL: <http://deccancollege.ac.in/>

URL: <http://www.deccan.ac.in/>

URL: <http://www.deccanpharmacy.com/>

**Mechanism/ Norms and Procedure for democratic/ good Governance**

Available in the respective Departments/Programmes on the following websites

URL: <http://deccancollege.ac.in/>

URL: <http://www.deccan.ac.in/>

URL: <http://www.deccanpharmacy.com/>

**Student Feedback on Institutional Governance/ Faculty performance**

Available in the respective Departments/Programmes on the following websites

URL: <http://deccancollege.ac.in/>

URL: <http://www.deccan.ac.in/>

URL: <http://www.deccanpharmacy.com/>

**Grievance Redressal mechanism for Faculty, staff and students**

URL: <http://www.dqi.org.in/Grievance%20Redressal%20Mechanism.html>

**Establishment of Anti Ragging Committee**

URL: <http://www.dqi.org.in/Anti-Ragging-Committe.html>

**Establishment of Online Grievance Redressal Mechanism**

URL: <https://www.aicte-india.org/feedback/index.php>

**Establishment of Internal Complaint Committee (ICC)**

Available in the respective Departments/Programmes on the following websites

URL: <http://deccancollege.ac.in/>

URL: <http://www.deccan.ac.in/>

URL: <http://www.deccanpharmacy.com/>

**Establishment of Committee for SC/ ST** URL: <http://www.dqi.org.in/Committee%20for%20SC%20ST.html>

**Internal Quality Assurance Cell**

Available in the respective Departments/Programmes on the following websites

URL: <http://deccancollege.ac.in/>

URL: <http://www.deccan.ac.in/>

URL: <http://www.deccanpharmacy.com/>

6	Programmes	<b>Name of Programmes approved by AICTE</b>						
				<b>Programme/Course</b>		<b>Approved Intake (2022-2023)</b>		
		<b>UG –Engineering</b>						
				B.E. Civil Engineering		120		
				B.E. Mechanical Engineering		120		
				B.E. ECE		90		
				B.E. CSE		90		
				B.E. IT		60		
				B.E. EEE		60		
				B.E. EIE		40		
				B.E. Prod		40		
		<b>PG –Engineering</b>						
				M.E. Transportation Engineering		18		
				M.E. Structural Engineering		18		
				M.E. Digital Systems		18		
				M.Tech CSE		18		
				PG-MCA		60		
		<b>UG –Pharmacy</b>						
				B.Pharm		100		
				Pharm-D		30		
				Pharm-D (PB)		10		
		<b>PG –Pharmacy</b>						
				Pharmaceutics		15		
		Pharmaceutical Analysis		15				
		<b>PG –MBA</b>		180				
		<b>PG –MHM</b>		60				
<b>NBA Accreditation Status</b>								
1.		Programme / Course Accredited			Process initiated			
<b>NAAC Accreditation Status</b>								
1.		Accredited			Process initiated			
<b>For each Programme the following details are to be given:</b>								
Programme/Course	No. of Seats	Duration	Cut off rank (last -3Y)			Fee 2021-2022	Campus placement (last-3Y with max/minsalary in Lakhs)	
			2021-2022	2020-2021	2019-2020			
<b>UG –Engineering</b>								
B.E. Civil Engineering	120	4 years	115151	83611	85116	Rs.72,000	18 (4, 2)	
B.E. Mechanical Engineering	120	4 years	114978	85449	89669	Rs.72,000	28(5, 3)	
B.E. ECE	90	4 years	107951	73112	72066	Rs.72,000	33(12, 4)	
B.E. CSE	90	4 years	46288	39535	44667	Rs.72,000	56(5, 4)	
B.E. IT	60	4 years	52928	47344	51124	Rs.72,000	55(12, 4)	
B.E. EEE	60	4 years	112870	85199	92257	Rs.72,000	18(4, 3)	
B.E. EIE	40	4 years	0	200411	98760	Rs.72,000	05(4, 2)	
B.E. Prod	40	4 years	0	0	0	Rs.72,000	07(5, 2)	
<b>PG –Engineering</b>								
M.E. Transportation	18	2 years	4879	2301	2284	Rs.90,000	05(4, 2)	

Engineering								
M.E. Structural Engineering	18	2 years	3491	1502	1706	Rs.90,000	08(4, 2)	
M.E. Digital Systems	18	2 years	9043	1413	1454	Rs.90,000	03(4, 2)	
M.Tech CSE	18	2 years	7412	907	637	Rs.90,000	10(7, 3)	
PG-MCA	60	3 years	43771	39103	43248	Rs.41,000	04(4, 3)	
<b>UG –Pharmacy</b>								
B.Pharm	100	4 years	21764	19580	26020	Rs.70,000	20 (3, 2)	
Pharm-D	30	6 years	6364	6424	8265	Rs.75,000	06 (3, 2)	
Pharm-D (PB)	10	3 years	312	995	344	Rs.93,000	03 (3, 2)	
<b>PG –Pharmacy</b>								
Pharmaceutics	15	2 years	6606	1282	1316	Rs.1,20,000	07(4, 2)	
Pharmaceutical Analysis	15	2 years	1923	2048	1716	Rs.1,20,000	06(4, 2)	
<b>PG –MBA</b>	180	2 years	27603	21030	16426	Rs.45,000	67(4, 2)	
<b>PG –MHM</b>	60	2 years		86	121	Rs.60,000	161(5, 2)	

7	Faculty	<b>Programme/Course</b>		<b>Web link</b>	
		<b>UG/PG –Engineering</b>			
		Civil Engineering	<a href="http://deccancollege.ac.in/civil_department_faculty.html">http://deccancollege.ac.in/civil_department_faculty.html</a>		
		Mechanical Engineering	<a href="http://deccancollege.ac.in/mechanical_dep_faculty.html">http://deccancollege.ac.in/mechanical_dep_faculty.html</a>		
		ECE	<a href="http://deccancollege.ac.in/electronics_dep_faculty.html">http://deccancollege.ac.in/electronics_dep_faculty.html</a>		
		CSE	<a href="http://deccancollege.ac.in/CSE_department_faculty.html">http://deccancollege.ac.in/CSE_department_faculty.html</a>		
		IT	<a href="http://deccancollege.ac.in/IT_dep_faculty.html">http://deccancollege.ac.in/IT_dep_faculty.html</a>		
		EEE	<a href="http://deccancollege.ac.in/electrical_department.html">http://deccancollege.ac.in/electrical_department.html</a>		
		EIE	<a href="http://deccancollege.ac.in/instrumentation_dep_faculty.html">http://deccancollege.ac.in/instrumentation_dep_faculty.html</a>		
		Prod	<a href="http://deccancollege.ac.in/production_dep_faculty.html">http://deccancollege.ac.in/production_dep_faculty.html</a>		
		SH&M	<a href="http://deccancollege.ac.in/BSH_dep_faculty.html">http://deccancollege.ac.in/BSH_dep_faculty.html</a>		
		<b>PG-MCA</b>	<a href="http://deccancollege.ac.in/MCA_dep_faculty.html">http://deccancollege.ac.in/MCA_dep_faculty.html</a>		
		<b>UG/PG –Pharmacy</b>	<a href="http://www.deccanpharmacy.com/department-of-pharmaceutical-chemistry/">http://www.deccanpharmacy.com/department-of-pharmaceutical-chemistry/</a>		
		<b>PG –MBA/MHM</b>	<a href="http://www.dshh.co.in/">http://www.dshh.co.in/</a>		

8	Profile of the Principal /Director	<p>Prof. Mir Iqbal Faheem, Ph.D  Director  DECCAN GROUP OF INSTITUTIONS  (A Self Financed Muslim Minority Technical Campus, Estd. by Dar-us-Salam Educational Trust)  (Affiliated to Osmania University, Hyderabad &amp; Approved by AICTE, New Delhi)  Darussalam, Aghapura, Hdyerabad – 500 001 Telangana, India  Mobile: 9704731117  Email: <a href="mailto:dcet@deccancollege.ac.in">dcet@deccancollege.ac.in</a>  URL: <a href="http://dgi.org.in/">http://dgi.org.in/</a>  Work Experience: 35 Years (Teaching/Research/Academic Administration)</p>	
---	------------------------------------	------------------------------------------------------------------------------------------------------------------------------------------------------------------------------------------------------------------------------------------------------------------------------------------------------------------------------------------------------------------------------------------------------------------------------------------------------------------------------------------------------------------------------------------------------------------------------------------------	--

8	Profile of the Faculty	<b>Programme/Course</b>		<b>Web link</b>	
		<b>UG/PG –Engineering</b>			
		Civil Engineering	<a href="http://deccancollege.ac.in/civil_department_faculty.html">http://deccancollege.ac.in/civil_department_faculty.html</a>		
		Mechanical Engineering	<a href="http://deccancollege.ac.in/mechanical_dep_faculty.html">http://deccancollege.ac.in/mechanical_dep_faculty.html</a>		
		ECE	<a href="http://deccancollege.ac.in/electronics_dep_faculty.html">http://deccancollege.ac.in/electronics_dep_faculty.html</a>		
		CSE	<a href="http://deccancollege.ac.in/CSE_department_faculty.html">http://deccancollege.ac.in/CSE_department_faculty.html</a>		
		IT	<a href="http://deccancollege.ac.in/IT_dep_faculty.html">http://deccancollege.ac.in/IT_dep_faculty.html</a>		
		EEE	<a href="http://deccancollege.ac.in/electrical_department.html">http://deccancollege.ac.in/electrical_department.html</a>		
		EIE	<a href="http://deccancollege.ac.in/instrumentation_dep_faculty.html">http://deccancollege.ac.in/instrumentation_dep_faculty.html</a>		
		Prod	<a href="http://deccancollege.ac.in/production_dep_faculty.html">http://deccancollege.ac.in/production_dep_faculty.html</a>		

	SH&M	<a href="http://deccancollege.ac.in/BSH_dep_faculty.html">http://deccancollege.ac.in/BSH_dep_faculty.html</a>
	PG-MCA	<a href="http://deccancollege.ac.in/MCA_dep_faculty.html">http://deccancollege.ac.in/MCA_dep_faculty.html</a>
	UG/PG –Pharmacy	<a href="http://www.deccanpharmacy.com/department-of-pharmaceutical-chemistry/">http://www.deccanpharmacy.com/department-of-pharmaceutical-chemistry/</a>
	PG –MBA/MHM	<a href="http://dshm.co.in/User/InnerPages/PageDetails?PageTitle=faculty&amp;ptype=admissions">http://dshm.co.in/User/InnerPages/PageDetails?PageTitle=faculty&amp;ptype=admissions</a>

9	Fee Details	<b>Programme</b>	<b>Fee fixed by TAFRC for the block period (2019-2022)</b>
		UG–Engineering	Rs. 72,000 per annum
		PG –Engineering	Rs. 90,000 per annum
		PG –MCA	Rs.41,000 per annum
		UG –Pharmacy	B.Pharm : Rs.70,000 / Pharm D : Rs.75,000
		PG –Pharmacy	M.Pharm :Rs.1,20,000 / Pharm D(PB):Rs.93,000
		PG –MBA/MHM	MBA : Rs. 45,000 / MHM : Rs. 60,000

10	Admission	<b>Year wise Sanctioned Intake/Admitted</b>								
		<b>Programme/Course</b>	<b>CAY (2021-2022)</b>		<b>CAY<sub>1</sub> (2020-2021)</b>		<b>CAY<sub>2</sub> (2019-2020)</b>		<b>CAY<sub>3</sub> (2018-2019)</b>	
			S	A	S	A	S	A	S	A
		<b>UG–Engineering</b>								
		Civil Engineering	120	98	120	107	120	108	120	120
		Mechanical Engineering	120	51	120	84	120	94	120	120
		ECE	90	72	90	70	90	79	90	88
		CSE	90	90	90	90	90	90	90	90
		IT	60	60	60	60	60	60	60	60
		EEE	60	26	60	36	60	44	60	56
		EIE	40	0	40	2	40	7	40	27
		Prod	40	0	40	0	40	0	40	22
		<b>PG –Engineering</b>								
		Structural Engineering	18	18	18	18	18	18	18	18
		Transportation Engineering	18	12	18	13	18	14	18	18
		CSE	18	15	18	14	18	16	18	15
		Digital Systems	18	6	18	5	18	4	18	10
		<b>PG-MCA</b>	60	55	60	40	60	24	60	29
		<b>UG/PG –Pharmacy</b>								
		<b>B.Pharm</b>	100	100	100	100	100	100	100	100
		Pharm-D	30	30	30	29	30	30	30	30
		Pharm-D (PB)	10	10	10	10	10	9	10	10
		<b>PG –Pharmacy</b>								
		Pharmaceutics	15	12	15	13	15	10	15	14
		Pharmaceutical Analysis	15	7	15	10	15	12	15	11
		<b>PG –MBA</b>	180	145	180	180	180	159	180	180
		<b>PG –MHM</b>	60	60	60	57	60	60	60	60
<b>Total</b>	1162	867	1162	938	1162	938	1162	1078		
<b>Legend: S (Sanctioned Intake) A (Admitted)</b>										

11	Admission Procedure	<b>Programme</b>	<b>Seat Matrix (% on approved intake)</b>		<b>Test Agency</b>	<b>URL</b>
			<b>State CET</b>	<b>Mgmt.</b>	<b>CET-Convener</b>	
		UG–Engineering	70%	30%	TSEAMCET	<a href="http://www.tseamcet.nic.in">www.tseamcet.nic.in</a>
		PG –Engineering	70%	30%	TSPGECET	<a href="http://www.pgecet.tsche.ac.in">www.pgecet.tsche.ac.in</a>
		PG –MCA	70%	30%	TSICET	<a href="http://www.tsicet.nic.in">www.tsicet.nic.in</a>
		UG –Pharmacy	70%	30%	TSEAMCET	<a href="http://www.tseamcet.nic.in">www.tseamcet.nic.in</a>
PG –Pharmacy	70%	30%	TSPGECET	<a href="http://www.pgecet.tsche.ac.in">www.pgecet.tsche.ac.in</a>		

		PG –MBA/MHM	70%	30%	TSICET	<a href="http://www.icet.tsche.ac.in">www.icet.tsche.ac.in</a> , <a href="http://www.osmania.ac.in">www.osmania.ac.in</a>		
		Calendar for admission against Convener seats and allotment as per the respective Convener(s) of the programme, Govt. of Telangana Calendar for admission against Management/vacant seats as provided by TSCHE, Govt. of Telangana						
12	<b>Criteria and Weightage for Admission</b>	CET-Conveners/TSCHE, Govt. of Telangana						
13	<b>List of Applicants</b>	As per the admission guidelines and admission schedule provided by TSCHE, Govt. of Telangana						
14	<b>Results of Admission Under Management seats/Vacant seats</b>	As per the admission guidelines and admission schedule provided by TSCHE, Govt. of Telangana						
15	<b>Information of Infrastructure and Other Resources Available</b>	<b>Infrastructure</b>						
			<b>No. of Rooms</b>					
		Programme	Class	Tutorial	Lab	Drawing	Computer Center	Central Exam
		UG–Engineering	44	11	40	9	8	1
		PG –Engineering	8	5	6	-	4	1
		PG –MCA	3	1	3	-	1	1
		UG –Pharmacy	7	4	1	-	2	1
		PG –Pharmacy	6	5	4	-	2	1
		PG –MBA/MHM	9	5	1	-	1	1
		<b>Min-Unit Area (m<sup>2</sup>)</b>	80 m <sup>2</sup>	60 m <sup>2</sup>	150 m <sup>2</sup>	150 m <sup>2</sup>	330 m <sup>2</sup>	360 m <sup>2</sup>
Barrier Free Built Environment for disabled and elderly persons: <b>Available</b> Occupancy Certificate: <b>Available</b> Fire and Safety Certificate: <b>Available</b> Hostel Facilities: <b>Available</b>								
	<b>Library</b>	Programme/Course	Titles	Journals	Online National/ International Journals subscribed			
		<b>UG/PG –Engineering</b>			<b>Adequate prescribed number of National and International Journals are subscribed to cater the need for academic and research purpose for all the Programme/Courses</b>			
		Civil Engineering	1870	18				
		Mechanical Engineering	1647	06				
		ECE	2433	10				
		CSE	2484	13				
		IT	1638	8				
		EEE	1219	4				
		EIE	858	3				
		Prod	667	3				
		<b>PG-MCA</b>	765	6				
		<b>UG/PG –Pharmacy</b>	1363	31				
		<b>PG –MBA/MHM</b>	5263	33				

**Laboratory and Workshop**

Programme/Course	Major Equipments
<b>UG/PG –Engineering</b>	
Civil	CTM,UTM,TL,STN,MAR,STAB,SHEAR,STADD,AUTOCAD
Mech	ICENG, PUMPTUR,HTCOM,LATHE,FITTINGS,TIN SMITHY
ECE	CRO,FUNCTION,UP UC KITS,UWBENCHES
CSE	IBMXSERIES 226 SERVERS, HP SCANNER, LASER PRINTER,CPLD,VS,RIDE,UUPS,XLINUX,MSDN,OS WIN32, ALNG
IT	I3, I5,MC&INT KITS, KRYKARDS,UPS,SCOPENSER,REDHAT LINUX, RATROSE,ORACLE
EEE	RECTIFIER UNIT, OSCILLISCOPE, DECADE RESISTANCE BONES, RELAY TEST KIT TOOL BOX, SIMULINK CONTROL SY
EIE	FCT,MCP,PCTRAIN,CVC,PCT,PLC
Prod	MIA,MOUL,ARCWEL,CNCLAT,DIES,MOULD
SHM	ELCT,TLB,DEMIM PLANT,SPECTROPHOTOMETERS,OCSILLOSC,P MTERS, DTTO,NRAM,UPS
<b>PG-MCA</b>	SER,COMP,PRINT,STAB,UPS,AIRCOND
<b>UG/PG –Pharmacy</b>	HPLC, UV, FTIR, Brook field viscometer
<b>PG –MBA/MHM</b>	Computers, Printers, Scanner, LCDs

List of Experimental Setup in each Laboratory/ Workshop:

As per Osmania University approved scheme and syllabus URL:<http://www.uceou.edu/DeanFE.html>

**Computing Facilities**

Programme	Internet Bandwidth	Number and configuration of System	Number of system connected by LAN/WAN	Major software packages
UG/PG–Engineering PG –MCA UG/PG–Pharmacy PG –MBA/MHM	500Mbps ACT fiber net and 100 Mbps leased line by SoL + 40 Mbps Wi-Fi,	692	692	Auto-CAD-2010 Auto-CAD LDDT Rel 2i Auto-CAD Map-2008 STADD – Pro 2001 3-D Studio Viz Rel 3i NASTRAN MATLab I CAP/4 Windows 8.71 (P SPICE) Active HDL 4.1Mat Lab 5.1 Mat Lab 7.12Xilinx HDL Cadence, Mentor Graphics MATLAB CONTROL SYSTEM TOOL BOX DIGITAL SIGNAL TOOL BOX Ansys 15Solid Works PTC Creo 2.0Iron CAD 2012 CATIA V 5 R11Auto CAD 2000 Gibbs CAMCNC offline milling CNC TurningCNC Train Mill & Turn Work space Simulation Iron CAD 3.2 Ansys 5.7 Solid Works Education Version Microsoft VISIO, etc

Innovation Cell: **Available**

	<p><b>List of facilities available</b>  Games and Sports Facilities: <b>Available</b>  Extra-Curricular Activities: <b>Available</b>  Soft Skill Development Facilities: <b>Available</b></p> <p><b>Teaching Learning Process</b>  Curricula and syllabus for each of the Programmes as approved by the University  Academic Calendar of the University:  Available on the below website  URL: <a href="http://www.uceou.edu/DeanFE.html">http://www.uceou.edu/DeanFE.html</a>  Academic Time Table with the name of the Faculty members handling the Course  Teaching Load of each Faculty: Available in the respective Departments/Programmes  Internal Continuous Evaluation System and place  Student's assessment of Faculty, System in place:  Available in the respective Departments/Programmes on the following websites  URL: <a href="http://deccancollege.ac.in/">http://deccancollege.ac.in/</a>  URL: <a href="https://deccan.ac.in/">https://deccan.ac.in/</a>  URL: <a href="http://www.deccanpharmacy.com/">http://www.deccanpharmacy.com/</a></p>
--	---------------------------------------------------------------------------------------------------------------------------------------------------------------------------------------------------------------------------------------------------------------------------------------------------------------------------------------------------------------------------------------------------------------------------------------------------------------------------------------------------------------------------------------------------------------------------------------------------------------------------------------------------------------------------------------------------------------------------------------------------------------------------------------------------------------------------------------------------------------------------------------------------------------------------------------------------------------------------------------------------------------------------------------------------------------------------------------------------------------------------------

	<p>For each Post Graduate Courses give the following:  Title of the Course  Curricula and Syllabi  Available on the below website  URL: <a href="http://www.uceou.edu/DeanFE.html">http://www.uceou.edu/DeanFE.html</a>  Laboratory facilities exclusive to the Post Graduate Course  Available in the respective Departments/Programmes on the following websites  URL: <a href="http://deccancollege.ac.in/">http://deccancollege.ac.in/</a>  URL: <a href="http://www.deccan.ac.in/">http://www.deccan.ac.in/</a>  URL: <a href="http://www.deccanpharmacy.com/">http://www.deccanpharmacy.com/</a></p>
--	------------------------------------------------------------------------------------------------------------------------------------------------------------------------------------------------------------------------------------------------------------------------------------------------------------------------------------------------------------------------------------------------------------------------------------------------------------------------------------------------------------------------------------------------------------------------------------------------------------------------------------------------

16	Enrollment of students in the last 3 years	<b>Enrollment in last three years</b>				
		<b>Programme/Course</b>	<b>CAY (2021-2022)</b>	<b>CAY<sub>1</sub> (2020-2021)</b>	<b>CAY<sub>2</sub> (2019-2020)</b>	<b>CAY<sub>3</sub> (2018-2019)</b>
		<b>UG-Engineering</b>				
		Civil Engineering	98	107	108	120
		Mechanical Engineering	51	84	94	120
		ECE	72	70	79	88
		CSE	90	90	90	90
		IT	60	60	60	60
		EEE	26	36	44	56
		EIE	0	2	7	27
		Prod	0	0	0	22
		<b>PG-Engineering</b>				
		Structural Engineering	18	18	18	18
		Transportation Engineering	12	13	14	18
		CSE	15	14	16	15
		Digital Systems	6	5	4	10
		<b>PG-MCA</b>	55	40	24	29
		<b>UG/PG-Pharmacy</b>				
		<b>B.Pharm</b>	100	100	100	100
		Pharm-D	30	29	30	30
		Pharm-D (PB)	10	10	9	10
		<b>PG-Pharmacy</b>				
		Pharmaceutics	12	13	10	14
Pharmaceutical Analysis	7	10	12	11		
<b>PG-MBA</b>	145	180	159	180		
<b>PG-MHM</b>	60	57	60	60		
<b>Total</b>	<b>867</b>	<b>938</b>	<b>938</b>	<b>1078</b>		



17	List of Research Projects/ Consultancy Works	<table border="1"> <thead> <tr> <th rowspan="2">Programme/Course</th> <th colspan="4">Publications (if any) out of research in last three years out of masters projects</th> </tr> <tr> <th>CAY</th> <th>CAY<sub>1</sub></th> <th>CAY<sub>2</sub></th> <th>CAY<sub>3</sub></th> </tr> </thead> <tbody> <tr> <td colspan="5"><b>PG –Engineering</b></td> </tr> <tr> <td>Structural Engineering</td> <td>03</td> <td>02</td> <td>18</td> <td>16</td> </tr> <tr> <td>Transportation Engineering</td> <td>01</td> <td>08</td> <td>14</td> <td>18</td> </tr> <tr> <td>CSE</td> <td>04</td> <td>08</td> <td>18</td> <td>15</td> </tr> <tr> <td>Digital Systems</td> <td>01</td> <td>07</td> <td>06</td> <td>05</td> </tr> <tr> <td><b>PG-MCA</b></td> <td>08</td> <td>10</td> <td>13</td> <td>10</td> </tr> <tr> <td colspan="5"><b>PG –Pharmacy</b></td> </tr> <tr> <td>Pharmaceutics</td> <td>01</td> <td>03</td> <td>10</td> <td>14</td> </tr> <tr> <td>Pharmaceutical Analysis</td> <td>01</td> <td>02</td> <td>12</td> <td>11</td> </tr> <tr> <td><b>PG –MBA</b></td> <td>04</td> <td>06</td> <td>12</td> <td>14</td> </tr> <tr> <td><b>PG –MHM</b></td> <td>02</td> <td>02</td> <td>16</td> <td>18</td> </tr> </tbody> </table>	Programme/Course	Publications (if any) out of research in last three years out of masters projects				CAY	CAY <sub>1</sub>	CAY <sub>2</sub>	CAY <sub>3</sub>	<b>PG –Engineering</b>					Structural Engineering	03	02	18	16	Transportation Engineering	01	08	14	18	CSE	04	08	18	15	Digital Systems	01	07	06	05	<b>PG-MCA</b>	08	10	13	10	<b>PG –Pharmacy</b>					Pharmaceutics	01	03	10	14	Pharmaceutical Analysis	01	02	12	11	<b>PG –MBA</b>	04	06	12	14	<b>PG –MHM</b>	02	02	16	18
		Programme/Course		Publications (if any) out of research in last three years out of masters projects																																																														
			CAY	CAY <sub>1</sub>	CAY <sub>2</sub>	CAY <sub>3</sub>																																																												
		<b>PG –Engineering</b>																																																																
		Structural Engineering	03	02	18	16																																																												
		Transportation Engineering	01	08	14	18																																																												
		CSE	04	08	18	15																																																												
		Digital Systems	01	07	06	05																																																												
		<b>PG-MCA</b>	08	10	13	10																																																												
		<b>PG –Pharmacy</b>																																																																
		Pharmaceutics	01	03	10	14																																																												
		Pharmaceutical Analysis	01	02	12	11																																																												
<b>PG –MBA</b>	04	06	12	14																																																														
<b>PG –MHM</b>	02	02	16	18																																																														
Number of Projects carried out, funding agency, Grant received: NIL																																																																		
Industry Linkage:																																																																		
MoUs with Industries (minimum 3)																																																																		
18	LoA and subsequent EoA till the current Academic Year	Available on the website URL: <a href="http://www.dgi.org.in/">http://www.dgi.org.in/</a>																																																																
19	Accounted audited statement for the last three years	Available on the website URL: <a href="http://www.dgi.org.in/">http://www.dgi.org.in/</a>																																																																
20	Best Practices adopted, if any	<p><b>Enrichment of Teaching and Learning Process</b></p> <ul style="list-style-type: none"> <li>On-line Feedback from students and alumni for strengthening the teaching-learning system.</li> <li>Improving Library with print and e-resources.</li> <li>Intensive use of technology and ICT enabled teaching-learning methods like Moodle, MOOCS, NPTEL, QEEE lectures, etc.</li> <li>Wi-Fi enabled campus encourages additional learning by way of access to website containing e-learning resources.</li> <li>Monitoring center for research for undergoing M.E. scholar's dissertation work</li> <li>Transparency ensured in evaluating students' academic performance</li> <li>24x7 students' feedback about teachers' performance and follow-on action.</li> <li>Introduced appraisal of teachers' performance by the students twice in an academic year</li> </ul> <p><b>Enrichment of Skill Sets of Student</b></p> <ul style="list-style-type: none"> <li>Promoting the students for their involvement in co-curricular activities within and outside the campus by assigning additional credit under an able guidance of faculty</li> <li>Industrial training and internship since second year of UG program</li> <li>Conducting guest lectures, workshops and seminars to encourage higher education</li> <li>Proctor system - each faculty member work as a proctor for a group of twenty students (five each from First year to final year B. E. program) for counseling and better performance of students.</li> <li>Advanced learners are encouraged to come out with innovative ideas / take up short term projects and they are involved in mentoring activities.</li> <li>Incubation center with the motive of encouraging the establishment of start-up companies in the immediate future</li> <li>Career guidance cells, soft-skill development activities, grievance redressal cell helping students to excel in academics.</li> </ul>																																																																

**Interaction with Outside World**

- Establishment of tie-ups with renowned industries and institutes
- Motivation and support for students for appearing competitive exams and summer internship in industries, research Institute in India and abroad.
- Creation of Centers of Excellence to promote research in diversified fields to emerge in National and International level.
- Formation of Industry-Institute Partnership Cell to promote professional education and research.
- Academic flexibility and participation of industries in teaching.

**Faculty Development and Welfare**

- ERP implementation for management of Leave, Time table, Salary, Library, Exam and results, Fees Collection, Teaching learning processes, Admissions, etc.
- Appropriate functioning of grievance Redressal mechanism
- Implementation of CAS to promote faculty to higher post
- Enhance teacher quality, all the faculty members to pursue Ph.D.
- Encourage faculty members apply for research and development projects funded by DST, UGC, CSIR, AICTE, DRDO, etc.
- FDP courses for the benefit of faculty members.
- Faculty members organizing / attending short term courses in emerging areas.
- Encourage all faculties in research, consultancy and extension in new and emerging areas thereby revenue generation.